

February Log Book

Kennedy Car 985

Kennedy High School

Advisor: Barry Wilson

Location: 4545 Wenig Rd. NE

Cedar Rapids, IA 52402

Phone Number: 319-784-7697

Email: bwilson@crschool.us

Alternative Student Email: cougarelectriccar@gmail.com

Colin Flannigan, Grade 10, Crew Chief

Dylan Bower, Grade 9, Assistant Crew Chief

Rodrigo Sagatsume, Grade 12, Driver

Kaleigh Martin, Grade 11, Documentation Lead

Elizabeth Severson, Grade 11, Documentation

Week 1

2/2/2020 – 2/8/2020

With the frame of the car already built, this week's focus for the 985 has been putting in steering and the seat. Putting in the steering went fairly smoothly even with Colin teaching each his new assistant Dylan about installing the steering mount, column, and wheel. The seat mount was also installed this week. Our seats are not permanently attached to the cars, instead they are attached to bars that can be removed their mounts. Overall, this week went smoothly and see any hiccups beyond small communications errors between crew chief and assistant that were quickly fixed.

The 985 as of 2/7/20 with steering and seat



Week 2

2/9/2020 – 2/15/2020

The 985 crew has been busy this week. Colin's focus has been on the braking system. So far he has mounted the brake pedal, connected the brake pedals to the actual brakes on the tires, and has started to work on fitting the master cylinder. Unfortunately, the 985's driver, Rodrigo, was gone most of this week, leaving Colin with no choice but to place the brake pedals based on another driver, Elizabeth Severson. Depending on how grades fall this semester, this may work out well, as the 985 car would have a backup driver in the event the primary driver fails a class and can no longer race. However, as the pedals currently stand today, they are too short for comfort for Rodrigo. In addition to the braking system, Colin also double-checked how Rodrigo fit within the cockpit of the car, making sure Rodrigo could comfortably fit into, and easily get out of the frame. Colin's assistant crew chief, Dylan Bower, has finished fitting and installing a new firewall, a panel in place to protect the driver if the batteries or motor were catch fire.



The brake and throttle pedals

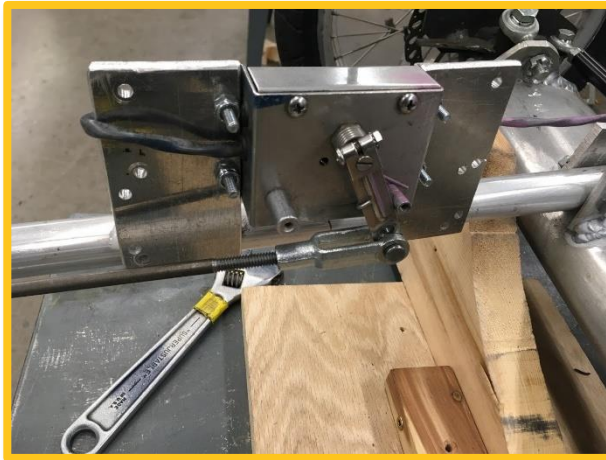


The firewall

Week 3

2/16/2020 – 2/22/2020

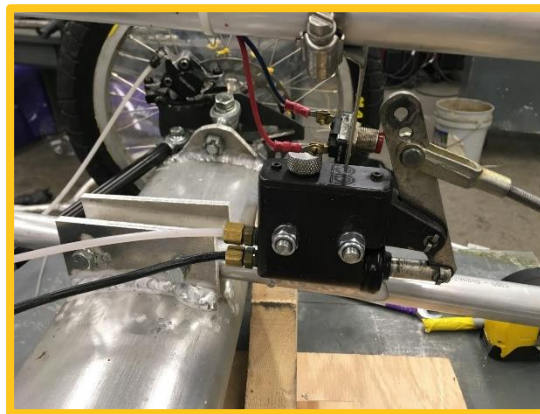
Colin and Dylan have been hard at work getting the last touches to the frame finished. They have spent most of the week creating mounts for the variety of controllers that are used in our cars. This includes the master cylinder, the throttle, the potentiometer, and the emergency on/off switch. The master cylinder controls the brakes, the throttle powers the motor with the batteries, the potentiometer controls the speed of the car, and the emergency on/off switch controls whether the car is getting power from the batteries. Additionally, they have finished the wiring from the battery to most of the controllers, with the exception of the motor controller. Besides a couple of mishaps while Colin was teaching his assistant crew chief how to wire, all in all, it was a productive week for the 985 team.



The throttle



The potentiometer



The brakes' master cylinder

Week 4

2/23/2020 – 2/29/2020

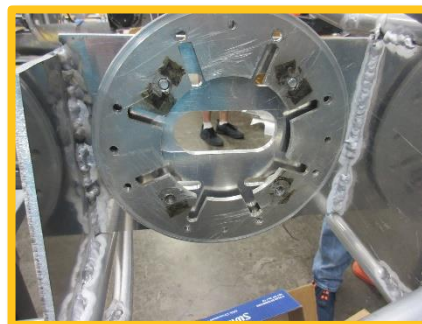
For the 985 team, this week has been a much needed clean up week. They have been able to tie up many loose ends, including finishing up the last touches of wiring and tying up the finished wiring to the frame with zip ties. Our advisor was gone on Thursday this week, which meant that no one in the shop could use power tools. While this put a damper on progress, the 985 team used the time to clean up their workstation, which as Colin put it, was desperately needed. Additionally, Colin and Dylan have been trying out their adaptable motor mount. Within the program, we have a couple of different motor types, called the Briggs and the Saietta. Colin plans on using both of these motors throughout the season, so he decided on creating the main z-shaped motor mount, which is used for Briggs motors, and an additional circular piece which can mount a Saietta motor. The z-shaped motor mount is directly welded into the frame of the car, while the circular mount is bolted into one side of the z-shaped mount is the car is running a Saietta motor. Colin and Dylan have had some difficulty getting the Saietta motor to mount onto the circular piece and may have to adjust the motor mount. The next step for the 985 car is to start on padding the frame and to finish up the motor mounts.



The finished wiring awaiting batteries



The Briggs motor mount



The Saietta motor mount